



## 27 Radnor Close

Maidstone ME14 2PW

**£95,000**



50% shared ownership £95,000, full price £190,000. Welcome to this charming one-bedroom first-floor apartment located on Radnor Close in Maidstone. This purpose-built flat, constructed in 2003, offers a comfortable living space of 495 square feet, making it an ideal choice for first-time buyers or those looking to downsize.

The property features a spacious lounge/diner, perfect for relaxing or entertaining guests. The bedroom provides a peaceful retreat, and the flat benefits from an allocated parking space, ensuring convenience for residents. With a leasehold of 103 years remaining and a council tax band B, this apartment presents an attractive opportunity for shared ownership at 50%.

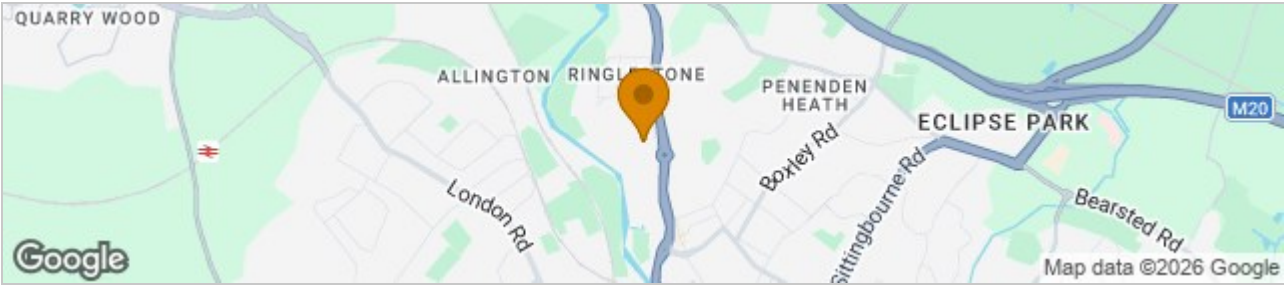
Situated in a prime location, the apartment is just a short distance from Maidstone East train station, providing excellent transport links for commuters. Additionally, the nearby Whatman Park offers a lovely green space for leisurely walks or outdoor activities. Maidstone itself boasts a variety of amenities, including shops, restaurants, and recreational facilities, ensuring that all your needs are met within easy reach.

With an impressive EPC rating of B, this property is not only comfortable but also energy-efficient, making it a sensible choice for modern living. If you are seeking a well-located, low-maintenance home in Maidstone, this delightful flat on Radnor Close could be the perfect fit for you. All applicants must be registered and approved by Hyde New Homes and may be required to carry out a shared ownership affordability assessment. Financial Information:

Property Value = £190,000, Percentage Share = 50%, Share Price = £95,000, Monthly Rent = £330.91, Monthly Service Charge = £122.98. The service charge and rent is reviewed annually on the 1st April.



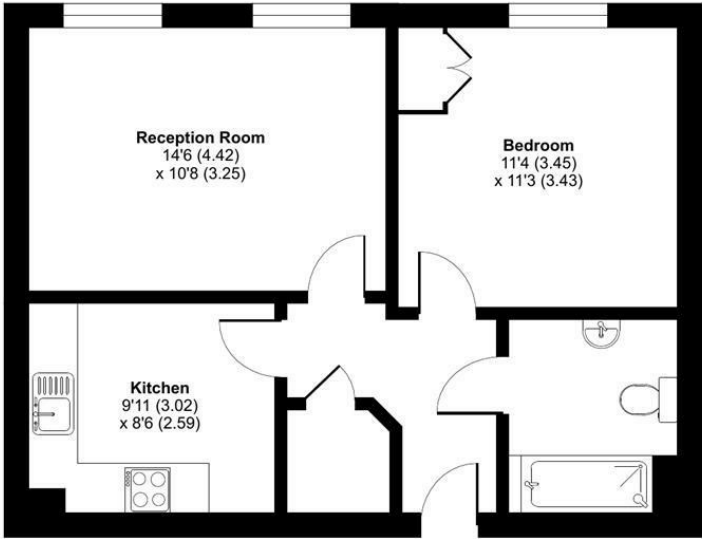
## Area Map



## Floor Plans

### Radnor Close, Maidstone, ME14

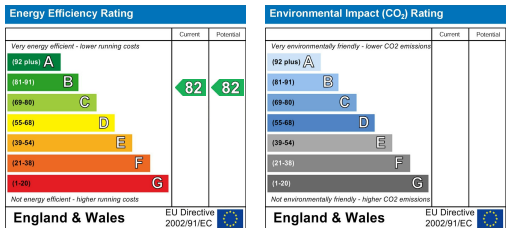
Approximate Area = 517 sq ft / 48 sq m  
For identification only - Not to scale



FIRST FLOOR

Floor plan produced in accordance with RICS Property Measurement 2nd Edition, Incorporating International Property Measurement Standards (IPMS2 Residential). © rnhccom 2025. Produced for Hyde Housing Association. REF: 1381663

## Energy Efficiency Graph



These particulars, whilst believed to be accurate are set out as a general outline only for guidance and do not constitute any part of an offer or contract. Intending purchasers should not rely on them as statements of representation of fact, but must satisfy themselves by inspection or otherwise as to their accuracy. No appliances or fittings have been tested by MMS. No person in this firm's employment has the authority to make or give any representation or warranty in respect of the property or items contained.